



Swallow House, Birmingham

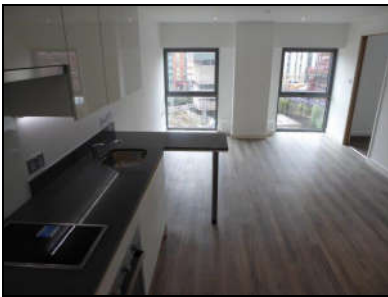


Client: Salmon Investments
Location: Swallow House, Birmingham

Value: £3.3m
Contract: JCT Design & Build 2011 with amendments

Duration: 36 Weeks

Architect: Associated Architects
Structural Engineer: Mason Navaro Pledge
M&E Consultant: Halligan Associates
Client Agent: Projex Solutions Ltd



This project involved conversion of an eleven storey former office block situated between the newly refurbished Grand Central train station and the iconic Victoria Square.

The development, part of Salmon Harvester's £8M development, comprised of fifty-five residential apartments complete with fully refurbished communal areas and passenger lifts.

The project has attracted attention within trade press and local newspapers for the creation of much needed residential accommodation within the heart of the city.



The project offered some unique challenges not least replacement of windows to both façades with external access limited to the rear and with the adjacent rail track to the front of the building.

Having previously worked successfully with the client in refurbishment of part of Victoria House, the contract for the Swallow House was then placed on a negotiated basis with Quantum in order to meet the required tight delivery timescales.

Salmon Investments